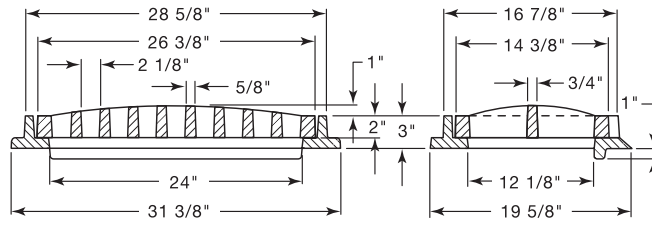


■ Note: When specifying/ordering grates, refer to "Choosing the Proper Inlet Grate" on pages 125-126.
 For a complete listing of FREE OPEN AREAS and WEIR PERIMETERS of all NEENAH grates, refer to pages 327-332.

R-3338-F Single Convex Inlet Frame, Grate

Heavy Duty

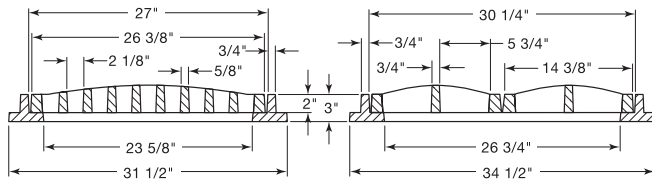


CATALOG NUMBER	GRATE TYPE	SQ. FT. OPEN	WEIR PERIMETER LINEAL FEET
R-3338-F	A	1.4	6.5

Grate reversible if flat top inlet is required.
 Four wall frame is also available.

R-3338-G Single Convex Inlet Frame, Double Grate

Light Duty

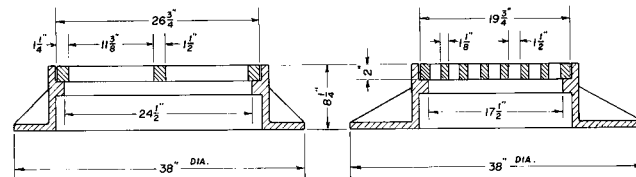


CATALOG NUMBER	GRATE TYPE	SQ. FT. OPEN	WEIR PERIMETER LINEAL FEET
R-3338-G	A	2.8	9.5

Grate reversible if flat top inlet is required.

R-3339 Catch Basin Inlet Frame, Grate

Heavy Duty

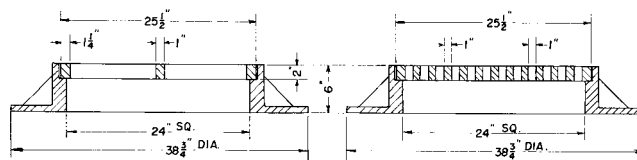


CATALOG NUMBER	GRATE TYPE	SQ. FT. OPEN	WEIR PERIMETER LINEAL FEET
R-3339	C	1.6	7.8
R-3339-1	C	1.4	7.8

Alternate grate available (1-1/2" x 4-15/16" slots), order as R-3339-1.

R-3339-A Catch Basin Inlet Frame, Grate

Heavy Duty



CATALOG NUMBER	GRATE TYPE	SQ. FT. OPEN	WEIR PERIMETER LINEAL FEET
R-3339-A	A or C	1.8	8.5

Supplied By:

TRENCH DRAIN SUPPLY

877-903-7246

www.trenchdrainsupply.com